



Monday 3rd December 2018 Term 2



An exciting world of learning

We have had an exciting term so far and have a busy lead up to the end of term. There are lots of fun activities planned for the children to share with families - there are details and dates for these below. As always, we are very pleased to have parents and carers come into school to find out more about their children's learning.

Reading café

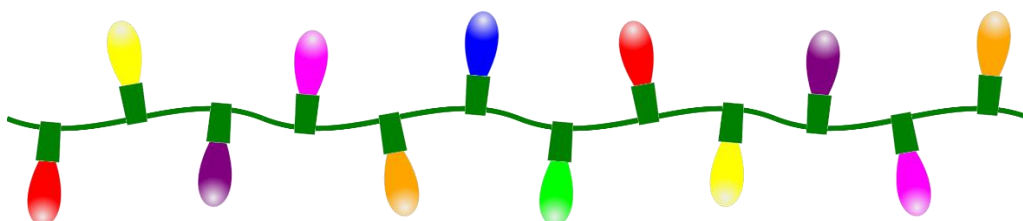
We have been very happy to host regular reading cafes, it is great to see parents and carers reading with their children in school. Children have also enjoyed this initiative, developing reading is a whole school focus for us and the help from parents is greatly appreciated.

This week's reading café is for Year 5, next week will be Year 6.



Reception and Nursery coffee morning

On **Thursday 6th December** we are inviting parents to come and have a look at our fantastic **Nursery and Reception classes**. For parents who haven't yet applied for a school place, the deadline is 15th January 2019. We are keen to show parents our outdoor spaces and talk about our exciting plans for improving the indoor spaces. Please join us!



Winter Wonderland

Tickets for our **Winter Wonderland Concert** go on sale today, it will take place on **Thursday 13th December**. Tea and coffee will be available in the dining hall from 3:30, the children's performances will start at 4:00 in the main hall. **Winter Fair** is on **Thursday 20th December**, there will be a café and crafts, Father Christmas will be here and our Christmas tree entries will be on display - who will win this year?



There will also be a raffle, tickets on sale from today - there will be many fantastic prizes to be won!



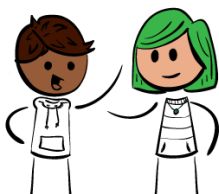
Reception and Nursery Nativity performances

Reception and Nursery Nativity performances will be on **12th December (9:30-10:30)** and **14th December (2:00-3:00)**. We hope you can join us.



Parent Forums

We hold regular parent forums to help make sure parents are kept up to date with what's going on at Barton Hill Academy. They take place in the main hall usually from 9:00-9:30, tea and coffee is available. If you have any ideas or thoughts about Parent Forums, please let us know - we would love to hear what you think!



Wednesday 12th December: Academy Improvement Update

Festive lunch

This year, our Festive lunch will be on **Thursday 20th December**. It is always a special event with staff serving the children their meals, please sign up for this using ParentPay (remember to state whether your child needs a traditional or vegetarian meal.)



Parents open afternoon

Parents open afternoon will be on **Friday 21st December**, the last day of term, **from 1:30**. Please join us and find out what your child has been learning about in school and celebrate their achievements. It will run from 2:00, parents will be able to take their children home from 3:00.

Parents message

Please remember to leave valuables, including money, at home.

Easy Fundraising

Easy Fundraising is a website that will send money back to the school for any online purchases you make. All you have to do is sign up to Easy Fundraising and support 'Barton Hill Academy' and then you go through the website to make your purchases on Amazon or Booking.com or many other retailers. After you have made your purchase a small part of what the retailer makes will come back to our school so that we can use it to buy resources for the school. This will cost you nothing extra but can bring in a lot of funding for the school.



You Tube Please keep a close watch on what your children are accessing online - if your child has access to Youtube please be aware that it's very easy for them to start watching one thing and click through to unpleasant content.

Term dates

Term 2 ends Friday 21st December
Term 3 starts Wednesday 9th January
Term 3 ends Friday 15th February
Term 4 starts Monday 25th February
Term 4 ends Friday 5th April
Term 5 starts Tuesday 23rd April
Term 5 ends Friday 24th April
Term 6 starts Monday 3rd June
Term 6 ends Friday 19th July 1.30pm

INSET

Mon 7th - Tue 8th Jan
Mon 22nd April (Bank Holiday)
Wed 5th June
Friday 28th June
Mon 22nd -Tue 23rd July

